

*Technology Solutions  
To Help You Growfast*



*At Growfast. We help you growfast*

# Software Development Resources at Growfast



**G**rowfast Computing Services was

started in Sept 1995 by tech savvy entrepreneurs with over a decade of experience in software development, currently involved in developing software ,trading in IT related products as a solution provider and consultants in the area of application development ,website development, imaging solutions and software products for the Financial,Banking,HealthCare,Hospitality and Distribution Verticals .

## Software Development Skill Profile

GrowFast is a development partner of Microsoft, IBM, ORACLE and Sybase.

### Our programming skills include:

- Large Scale Programming in Visual C++ 5.0. VB 6.0 Systems with more than a million lines of code
- Porting Large 16 bit C / C++ application code to 32 bit using Visual C++ codes
- Application Development based on Three-tier Architecture using Java / JDBC and ORACLE, MS-SQL server and DB/2.
- Java Applet development for Viewer plug in
- COM based component development. Document viewer and Scanning ActiveX Controls
- Automation Servers for third party integration to our Document Management System

### Resources for On-site Consulting Assignments

GrowFast leverages on its expertise pool in leading edge technologies to provide competent and highly productive software engineers on a consulting basis to its clients. With our expertise and experience in Client Server and Internet / Intranet based application development, we can help our clients find quality workforce in time for their projects

Attractive cost benefits result from projects that are executed by us at our software development facilities in Mangalore, India. These facilities are equipped with state-of-the-art equipment, software, networking and communications. Off-shore development provides the best value for "Development Dollars"

However, cost reduction is not the only reason why our customers seriously consider this option. Availability of a large development workforce with diverse skills, senior Project Managers, an in-house Quality Assurance Department, all combine together to provide high quality software development



### Software Development Projects:

#### combination of On-site and Off-shore

Many of our prospective customers require offloading their software development projects to reliable third parties. GrowFast undertakes such projects on a combination of time and material and fixed rate basis. Our customers get substantial cost and time benefits even when the project is executed on-site. Our team brings experience and project management skills to provide productivity; and high quality output

GrowFast has developed software ,based on the 3 tier client server software architecture for prestigious clients like

Sterling Bank U.S.A,  
RegionsBank U.S.A,  
Rabo Bank U.K ,  
Fallon-Clinic U.S.A,  
Fidelity U.S.A.,  
Corporation Bank India.

Onsite/Offshore Development of software for U.S./European Markets on the above technologies are undertaken by us.



*At Growfast. We help you growfast*

# Growfast in Banking And Financial Services

## Visual Banker



Visual Banker is of true Client/Server architecture. Visual Basic has been chosen as the front end to access any RDBMS database in the back end. Hence Visual Banker, is now scaleable from PCs to mainframes and operable in any OS platform, Visual Banker builds on the strength of Visual Basic and adds new enhanced features to take the existing system into new dimension. Visual Banker has a new look with the Graphical User Interface which gives the user ease of use as well as ability to view reports in the form of graphs and charts. Since it is written using Object Oriented Programming, it provides better modularity to add new modules to existing systems, better performance and portability.

Visual Banker has a combination of power and flexibility in terms of banking functionality and in database /platforms selection.

Visual Banker helps the bank to reduce operational costs while improving the efficiency and accuracy of its operation. The customers of banks can be served timely making them happy and satisfied which will help the bank increase the profit. Reports needed by the management can be printed or viewed with ease.

## Modules of Visual Banker

- Core Module
- Extended Modules
- Support Modules
- In-Built Utilities
- Features of Visual Banker
- Open System
- Modular Approach
- Parameter Driven
- Up-to-date information
- Multi-branching
- System Control
- Launch Pad
- Ease of use
- Security
- General purpose
- Report writer
- Fallback System



## TBSPRO-Terminal Benefits Software

This solution TBSPRO takes care of the operations of *Provident Fund, Gratuity and Pension* Departments of the Bank, under one roof. This system also caters to the VRS scheme in operation in public sector banks.

This system is running live in Corporation Bank, in Mangalore, many more Public Sector banks have also shown keen interest in our solution.

Having been developed on RDBMS based Client-Server Technology, the solution offers sound data security mechanisms combined with up-to-date audit features.



## Functionality

Receiving Credit from Branches- Monthly

Accounting for total Credit and individual credit for staff

Accounting for Pension apportionment

Periodic Interest Calculation/ Credit

Periodic Statement of Accounts

Non Refundable Loans from PF Account

PF Claims and Settlements

Gratuity Calculation, Claims and Settlements

Pension calculation and Accounting

Family Pension Calculation and Accounting

Pension Scroll Preparation

Settlements on account of VRS MIS reports,

General reports and queries Audit Trails and security Features



You will be able to run the interest calculation, for employees who are on the verge of retirement, w/o latest data. This will give you an idea of the outflows involved as well as an indication of when the employee may be approximately due. On receipt of the latest information regarding increments etc.. the same can be incorporated easily.

*At Growfast. We help you growfast*

## **FinFlow a Cash Management Software**

There is a need for corporates to receive and collect their funds in a central pool or concentration account from various standalone clearing locations.

For example, if a cheque is deposited up-country in India, it is not known when the funds will reach Mumbai.

Therefore the backbone of receivables management is the branch network and correspondent banking arrangements with local clearing banks in remote clearing centres

The collection float has the following considerations

**Invoicing Float:** Effective Invoice management involves reducing the invoice float and the time it takes for the customer to receive the invoice. Delays in invoice preparation or errors on the invoice can extend the entire payments process by days or even weeks

**Mail Float:** The Interval between the time the payment is mailed and the date the payment is received by the payee or at the processing site

The postal system is unreliable, leading companies to hire messengers or use a bank branch network to pick up and deposit payments to reduce the mail float.



**Processing Float:** (The Interval between the time a cheque is received by the processing site and the time it is deposited at a financial institution). Depending on the available resources in a company's accounts department, cheques may remain in the office for few days before being deposited

**Availability Float:** (The interval between the time a cheque is deposited and the time a company's account is credited with the collected funds

**Information Float:** Monitoring and controlling a company's accounts receivable are important aspects of overall credit policy. Promptly updating credits minimises exposure to bad debt and increases sales by releasing lines of credit for the customer

## **Indian Scenario**

- \* Huge potential in India
- \* Logistical problems
- \* High interest rates
- \* Growth and therefore need for liquidity
- \* Therefore a highly profitable business
- \* 40% of profits contributed by CMS
- \* Top 5 banks in India doing about 25000 crores/month
- \* And very competitive
- \* Products are being commoditised
- \* Innovative & marginal pricing
- \* Evolving markets
- \* Continuous addition of products & services
- \* Quick time-to-market

## **Why Cash Management??**

- Competitive Pressure
- Change in income profile
- Cross selling opportunities



In Short Faster Collection of receivables means less need to rely on bank loans and overdraft facilities for working capital. By narrowing the requirement for external funds, treasury adds value to the profit and loss account !!!!!!!!!

## **What you need for it?**

- Cash Management Processing Centre
- Technology
- Correspondent Bank tie-ups
- Logistical Partners

*At Growfast. We help you growfast*

**From a customers perspective**

Quick time to market

Leverage existing legacy systems

Provide customised information

Flexible information delivery

Adapt to the markets' changing needs e-enabled

**From the bank's perspective**

Flexibility with charging

Risk monitoring

Our software FinFlow has the following features

**Collection Services**

**Local Cheques**

- Collection of Local Cheques for Corporate clients and crediting the same into the cash concentration account of the corporate client according to the selected/ allotted process flow .
- Maintenance of ZBA with the collecting branches
- Processing of returned items
- Control over exposure limits
- Client specific MIS Capture/Generation
- Disbursement of funds from the pooling/ funding branches



- Tracking of Courier and other charges based on clearing locations

**Clearing Services:** Clearing of Outstation cheques in a time bound manner and remittance of the same into the cash concentration accounts of the corporate clients.

**Remittance Services:** This is a feature under which the bank can undertake small number of high value payments like excise, sales tax etc...spread over many states and union territories, which are time bound ,on behalf of its clients

**Payment Services:** Under this ,the bank can undertake large number of small value payments spread over a large geographic network eg: dividend, commisions, salaries.

**Accounting** The Software provides accounting features as per banking standards and all MIS is available in both reporting as well as per client defined soft form.

**Charging & Billing** Charging and billing is carried out on weekly ,monthly basis,a lot of flexibility is provide so that the bank can vary the charges as per dynamic developments in the market and as per competitive pressure



**Modules**

- Customer Information
- Collecting/Pooling Branch Module
- Country Hub Module (For Netting the Transactions)
- Collections
- Payments
- Remittances
- Clearing & Settlement
- Messaging & Encryption
- MIS Module
- Risk Management
- Charges/Reversals
- Accounting / GL Module
- Security
- Database Administration

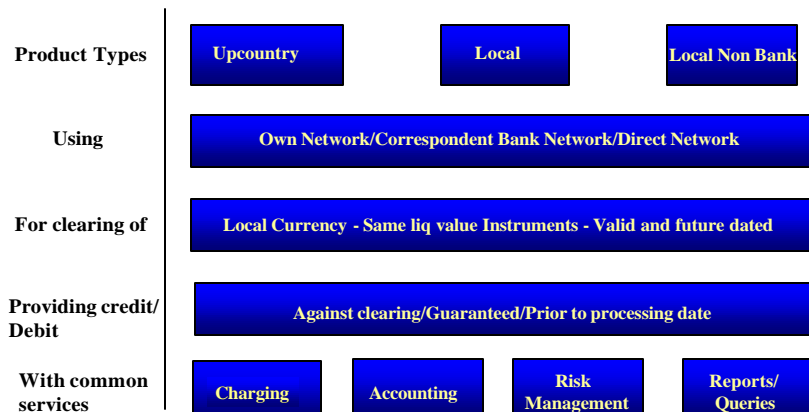
**Channel Connectors**

- Web Connector
- Wap Connector
- Telebanking Connector
- PDA Connector

**HighLights**

- Guaranteed One Time Message Delivery
- Message Acceptance from any legacy system
- Works in both on-line and offline modes
- Backup warehouse for delivered messages
- Message retention facility in case of major failures
- Continuous Message tracking facility
- Message redirection and message broadcasting facility
- Standardized reporting for message queue transfers

# Product Configuration



*At Growfast. We help you growfast*

## PMSPPro -Prospect Management System:

This software is meant for the marketing departments of bank's .It will prove to be a shot in the arm for bank's who want to market their products the way FMCG Companies market their products. The features of the product are as follows.

Membership Management: Enables you to define user types and roles

Segment & product management: enables you to define your products and services and classify them in appropriate focus segments.

Opportunity Management: Enables you to track specific opportunities and deals.

Target Management :enables you to set targets for your team and track them on a periodic basis.

Quotation Generator: allows you to generate quotations and track them to closure .

Schedule Management: allows you to generate quotations and track them to closure.

Report Management: allows you to generate up-to-date reports and charts of sales data.

Data Management: allows you to transfer key application data to an excel spreadsheet for



## Key Benefits Of this system

Define Organisation hierarchy to secure data access

- Restrict user level views of the sales data.
- Track your products sales by each sales member
- Forecast Segment trends and products demands for resource allocation
- Proactive approach to Account Management
- Enhance sales effectiveness
- Share your Account details company-wide
- Improve response times and enhance your CRM skills
- Enhance pipeline management
- Well informed forecasting of revenue projections
- Increase effectiveness of sales targets
- Receive up-to-date results of targets achieved
- Maximize your time and productivity
- Track mails and activities associated with prospects

## PSMM (Printing and Stationary Materials Management Software)

This package automates the printing and stationary departments of banks.

It has the following modules

Procurement Module: This automates the process of procurement of both security items and non-security items .it has options for generation of enquiry,quotions comparison,placement of purchase order with delivery schedule ,entry of goods receipt,and reporting of defects and damages

Despatch Module : Has options for servicing the indents raised by branches of the bank assessment of the indents raised,generating of issue notes ,dispatch note preparation,acknowledgement by branches for security items.

Payments Module : Payorder generation ,bills entry etc..

Inventory Module: . Tracking inventory through stock reports ,reorder level based ordering for insufficient items.

Field	Value
Zone Code	001
Zone Name	WESTERN-8 (MUMBAI-1)
Name Of Zone Head	
Zone Address	3rd Fl. The Eagle Flight No. 301-302 Andheri East Pld. Andheri East
City	MUMBAI
Computerized	<input type="checkbox"/>
State	
Pin Code	400093
Phone	2832634
Phone 2	2832790
Std Code	
Opening Date	05/05/1993
Closing Date	05/02/2002
Remarks	TELEX: 01183003CNFORN

*At Growfast. We help you growfast*

## CAP AssetPro

We are pleased to introduce Cap AssetPro, the leading Asset Management Software that has been specifically designed to assist companies to account for and manage their fixed assets.



The package is of the highest specification and has been designed by accountants to provide complete management control over fixed assets and to eliminate the time and effort normally associated with this task.

Cap AssetPro has been completely redesigned from the ground up to take advantage of today's 32-bit processors. Written in Delphi, it is targeted to run on PC's with Windows NT or Windows 95/98 as their operating system.

The new version has a new user interface that will consolidate on Cap AssetPro 2's user-friendly presentation. With its new database and improved calculation engine, Cap AssetPro provides greater power and flexibility when accessing data or performing depreciation runs.

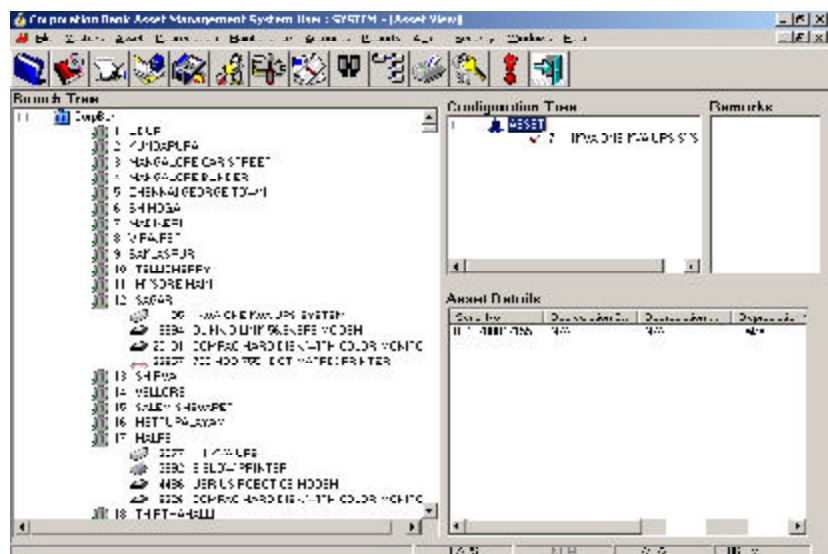
### It's Main Features Include:

- Ease of use
- Extensive reports
- Powerful search & query facility
- Year 2000 compliant
- Customised report formats
- Detailed asset information
- Multi-company
- Asset auto-numbering
- User definable reporting hierarchy
- User defined report periods
- User defined fields
- Re-lifeing of assets
- Ability to transfer assets between reporting levels
- Depreciation forecasting
- Depreciation journal interface with N/L packages
- Multi-level password security
- Comprehensive user guide & on-line help
- Operates on industry standard PC's and networks

Cap AssetPro is available as a desktop version for standalone use or multi-user for workgroup or local area networks. The desktop edition uses the same high speed Microsoft Jet Engine as Office 97 and links easily to 3rd party tools. For those clients with a significant number of assets requiring greater processing power, a client/server version is available that will support Microsoft SQLServer as its backend database.

Cap AssetPro introduces the concept of 'views' over asset data. A view is a user defined selection of asset data that can be presented as a grid, a detail screen or as a report. Using views, one can quickly home in on asset data no matter how large the database grows. Many views may be open at once and each edited independently, subject only to the memory limitations of your PC.

Cap AssetPro also has a new powerful reporting engine thus extending the capabilities of previous versions

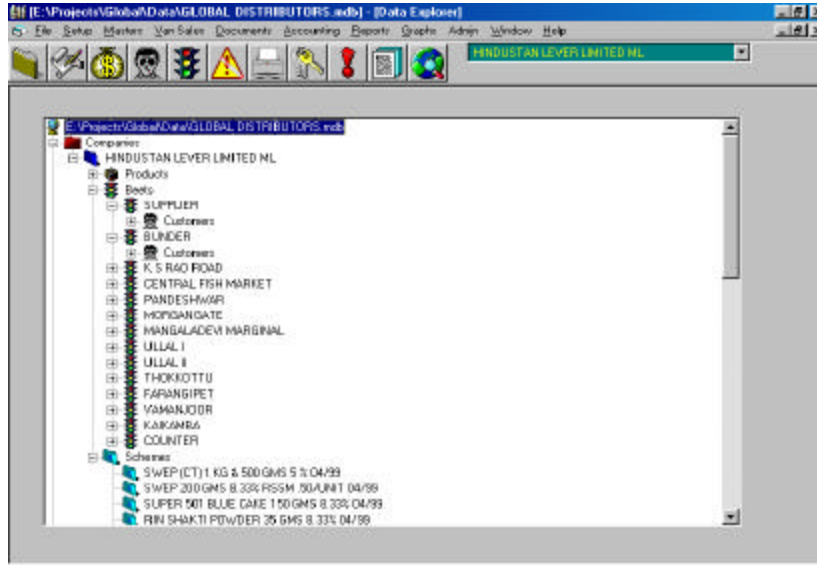


*At Growfast. We help you growfast*

# Growfast in Distribution, Retailing And FMCG Verticals

## DRAS Distributors Route Accounting System

DRAS is a software package designed specifically for the distributors and stockists of FMCG and Pharma companies



This Software Package gives you the power to monitor your business performance as closely as possible and to plan for the future using reliable and meaningful information.

- Tighter control over cash and stock, enabling you to eliminate leakage.
- More efficient deliveries and sales, so you can make more calls
- Accurate and timely management information which ensures faster response to marketing opportunities
- Greater control over your product ranges
- Better use of administration staff and financial resources
- Improved trust and good-will with your customers through error free documentation

## Expect Results

- Improves Field Level Management Activities
- Improves Sales Productivity

## MIDS Motor Industry Dealership software



is a comprehensive set of tools for managing an automobile dealership. Using PCs and industry standard network technology, the system is compatible with most factory dealer communications systems.

The GCS system is an open system. The hardware complies with open standards. The software is compatible with all Windows based applications. This openness allows the dealer to select **Best of Breed** applications. This means that you can select other vendor's applications and have them work with the GCS system.

With GCS, dealers have choices. Where to buy hardware and software. Where to get maintenance. This ensures that costs are competitive.

## Parts Inventory

GCS's MIDS Parts Inventory Control is a complete parameter controlled, inventory control system which allows each user to tailor the system to meet the dealership's requirements

- Increases Customer Satisfaction
- Increases Information Flow Between Customers, Sales Men, Marketing, and Corporate Management

## Overcome these critical business issues

- Pricing Compliance
- Promotion Compliance
- Out-Of-Stocks
- Display Compliance
- Product Quality Compliance
- Competitive Information



At Growfast. We help you growfast

# Growfast in Hospitality Solutions

## Features

- Total control of perpetual inventory
- Automatic file maintenance for setting up new items previously categorized as sold-not-stocked and for purging items from the master file
- Automatic returns
- Automatic calculation of suggested orders
- Automatic calculation of Stock Order Allowance
- Management reports
- Graphical folio printing with your logo
- Unlimited guest notes/comments
- Make reservations from check-out
- Graphical Registration Forms and Confirmation Letters using HTML templates easily maintained by the user
- Quick login at front desk
- More graphical windows
- Unlimited online storage of Night Audit Reports

## HMS-Hotel Management System



**HMS** is a completely integrated hotel property management system well suited for the large or small hotel, motel, inn, or bed and breakfast environment.

Front Desk, Reservations, Sales, Housekeeping, Gift Shop / Restaurant Point of Sale, Food and Beverage Inventory, Back Office Accounting, Credit Card Processing, Telephone Accounting, Meeting Room Scheduling, PBX/ Movie/ Voice Mail Interfaces; all are fully "connected" on ONE computer network.

## Fully Integrated

- \* Front Desk
- \* Reservations
- \* Back Office Accounting (City Ledger, General Ledger, Payroll, Accounts Payable)
- \* Restaurant and Retail Touch Screen Point of Sale
- \* Call Accounting, Movie, PBX/ PMS, Voice Mail, POS interfaces
- \* Meeting Rooms
- \* CONDO (tm) Owners' Statements, Owners' P&L, Owners' 1099's. Fully integrated with HMS.



We believe that everyone should have the benefits of a fully integrated property management system. So we designed, packaged, and priced our software, HMS at an unbeatable price/performance ratio.



Marinas, Resorts, Inns, Bed and Breakfasts

- Extended Stay Properties
- Central Reservations/ Multiple Properties
- True 32 bit Windows Application
- **HMS Lite!** for Small Properties.
- Multi-User Network Ready
- Proven stability with over 10 years performance in hundreds of properties worldwide
- 24 Hour Execu/Care Telephone Support
- Export guest and financial data into Excel, Access, Lotus, Quickbooks, etc.

## Multiple Platforms:

- Microsoft Windows™ 9x/2000/NT. Stand-alone, peer-to-peer, or client-server
- SCO Open Server™ (UNIX), Linux

"Easy to learn", "Easy to use" is what we hear over and over again from our users. We believe your time and energy should be focused toward serving your guests, not your computer system

*At Growfast. We help you growfast*

# Growfast in HealthCare Solutions

## HIS Hospital Information System

Today's changing healthcare environment demands speed of service, accuracy of data, and instant accessibility of information for delivery of quality patient care at affordable and competitive costs.

We have evolved a Hospital Information System (HIS) solution encompassing the clinical, non-clinical, front-office and back-office functions of a hospital that meets all the exacting information system requirements, and re-engineers the manner in which healthcare services are delivered.



**Administrative Services**  
**Patient Registration**  
**ADT**  
**Billing**  
**Inventory Management**  
**Purchase**



## Clinical Support Functions

**Laboratory**  
**Radiology**  
**Blood Bank**  
**Pharmacy**  
**Word Processing**  
**Dictation**



**Executive Information System**

**Patient Care**  
**Consulting**  
**Nursing**  
**Electronic**  
**Patient Record**



**Enterprise-wide Scheduler**

**Scalability**



**Small Clinics**



**Diagnostic centres**



**Large and Independent Hospitals**



**Network of Hospitals**



The HIS product has been conceived by a blend of seasoned professionals with rich relevant experience - clinical, administrative, and technical. The system has been designed to fulfill the necessities of the global market, and incorporates the best healthcare practices across the planet. Yet it is flexible enough to adapt to individual work practices. This will insure a long active life-time of the product

The system is being marketed worldwide. It has been evaluated by physicians and hospital administrators in developed countries, and adjudged to have a unique value over most currently available systems.

This system has applied information technology in various domains like supply chain management, transportation, and telecommunications. Our approach has been to nurture selected core competency areas, one of which is IT in healthcare.

We assure you of a long-term business commitment and partnership in the field of healthcare information systems to bring you the **immense values of up-to-date clinical, administrative, and technological practices** for the investments you make today



*At Growfast. We help you growfast*

# Growfast in Document Imaging Solutions

## eDocs

### Document Management System

### e-DOCS

A software system designed to integrate

- People
- Technology
- Paper Documents
- Electronic Files



GrowFast offers a range of products and services to handle multiple aspects of document management. By scanning and indexing documents, one can conveniently store millions of pages on a desktop optical storage system. Once stored, these become instantaneously available to multiple users across the organization.

### Failsafe Security for Vital Documents

Documents need controlled access. GrowFast Document Management Systems provide sophisticated security and rights control systems. Now organizations can determine in clear and specific terms, who can access different documents in the organization.

### WorkFlow And Business Process Re-Engineering

The real advantage come in Business Process Re-engineering using work flow implementation. Most Business process can be defined as a sequence of actions, happening on a set of relevant documents, which move from desk to desk, where staff and officers check and validate information, access other documents for reference and take actions. The process can be monitored, analysed and changed, to solve bottlenecks and deliver results quicker, thereby increasing productivity and lowering costs.

### Quantifiable Benefits ,High Return on Investments

GrowFast document Management allows you amazing cost efficiency as it is designed to provide a host of benefits to increase an organization's productivity.

- No more misfiled documents or lost files
- Safe and secure storage of documents from fire and other hazards
- Reduced storage space requirements
- Faster access to documents speeds up decision making
- Increased business handling capacity with workflow
- Save the environment by reduced photo-copying
- Increased customer satisfaction through enhanced service
- Immense cost savings in storage, distribution and productivity

### The Seven Most Common Information Management Problems in an Organization

Losing track of internally produced documents

Losing track of documents that require action

Misfiling documents in physical cabinets

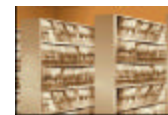
Dealing with filing backlogs

Losing track of checked out physical folders

No **single** system for **storing** related information

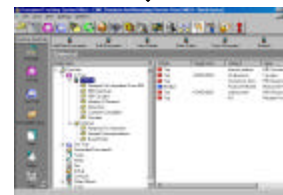
No **single** system for **sharing** related information

Convert

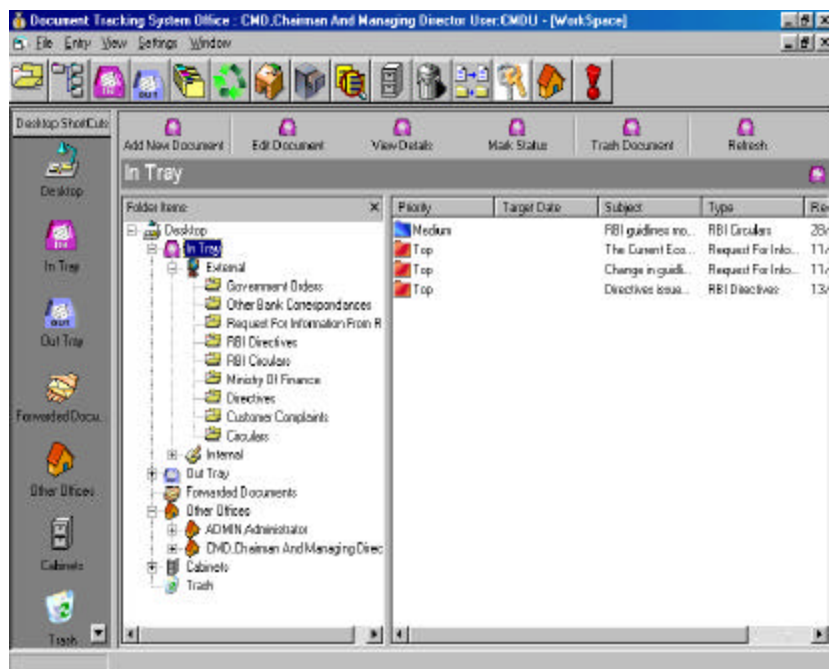


Your Documents/Files Correspondence Etc..

To



e-Docs



At Growfast. We help you growfast

# Growfast in Consultancy and Web Technologies

## Customised Software Development

We undertake customised software development for

- Large Manufacturing Companies,
- Financial Services (NBFC's)
- Public Sector Banks
- and FMCG Distribution & Trading Companies

We Undertake such software development projects both on

### Time and Material Basis:

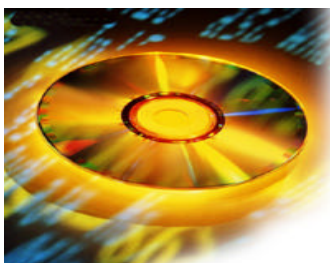
On Man-Month rates mutually agreed upon upfront

**Fixed Price Basis:** Pricing depends upon the specification and other factors



## Multimedia Services

In this information age, where printing press and still camera are becoming obsolete, do not restrict your company's image to a sentence or photograph. Use all channels of communications like text, video and audio. Dazzle your potential clients with a full-fledged multimedia brochure on a CD.



## Web Design Services



**We will design,setup,host and maintain your website**

### In your web site your Company will

- Publish business home pages on the Internet, featuring general company information, newsletters, sales information, or employment opportunities.
- Publish catalogs describing product specifications, prices, and ordering information.
- Publish information about human resources or benefits for employees.
- Provide customers with product support and technical information. Make files and documents available for downloading over the Web.

## Consultancy Services



We are committed to assisting our Clients in their efforts to make the most of their technology investment as they implement new processes, initiate new projects and provide support for their existing applications

*At Growfast. We help you growfast*

## Our Goal...

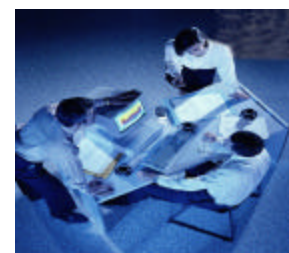
Is to assist our Clients in developing and implementing a Strategic Technology Plan that allows them to maximize the use of their technology dollar. Many companies face the continuing prospect of having to control their technology budget while supporting the Strategic Business Plan in a more comprehensive manner.

We believe the continuous application of well planned and well-managed technology is absolutely essential in accomplishing this task. In today's fast moving business environment, with technology expanding at an ever increasing pace, with technology budgets being squeezed and scrutinized, it is more important than ever that the proper planning of technology from procurement to retirement be addressed.

## We offer...

### Strategic Technology Planning :

Your Technology Plan must be supportive of your Corporate Goals. You must be able to identify and prioritize the necessary application of your technology, using the correct architecture and organization to support your business processes within your financial constraints. We have the methodology, technical experience and facilitation skills to assist our clients in this endeavor.



# Growfast in WorkFlow Solutions and BPO Services

## Life Cycle Management

The process of procuring, installing, training, implementing and supporting hardware and software is very expensive. We have the methodology and skills required to assist our clients in making this process as efficient as possible. We can help our Clients ensure that each dollar spent in this area is properly used.

## Network Analysis

The procurement, installation, training and support of your LAN/WAN are an expensive process. We have tools and technical expertise necessary to assist our clients in analyzing their LAN/WAN and determining the most cost-effective solutions.

## Business Continuity Planning

Information is the lifeblood of your company. In today's competitive environment, "recovering" from an interruption of your information flow is not good enough. Businesses today must practice "Continuity Planning" instead of "Disaster Recovery." Through careful and thorough planning, risks to your business are identified and then steps are taken to mitigate or even alleviate them entirely.



## Workflow Solutions for Higher Transaction Handling Capacity and Reduced per Transaction Cost

Workflow based solutions help you to expand your operations while at the same time gives you and iron grip on your growth.

Workflow automation techniques allow defining flexible, yet foolproof, processes to process transactions accurately and quickly. Free from physically moving documents form desk to desk, only images of the documents move from one stage to the next as per predefined rules.

The flow of transactions can be measured accurately.

## Outsourcing Services

Many organizations worldwide have been moving their operations to countries that offer obvious benefits in terms of cost reduction. However, setting up document processing operations in other countries can be a time consuming, complicated and at times, very frustrating job because of the numerous regulations, differences in work cultures, etc.

GrowFast's Processing Centers in India are fully geared to provide high quality document scanning, indexing back-file conversion and data entry services. Excellent Quality Control and Technology based Project Management ensures fast turnaround, high quality and reliability.

## Document Processing, Back-file Conversion and Data Capture

GrowFast provides a ready-to-go factory for document processing at an attractive price. One can sub-contract various processes that are essentially document-based processes involving accounting, procedural or other similar skills. For example, Credit Card applications, Home Loan and Lease Finance applications, Health-care claims processing, Freight and Express document processing, Product inquiries, Mailing List processing and many other processing jobs can be handled by GrowFast's trained workforce in India.

The key to this unique proposition from GrowFast are:

- GrowFast has state-of-the-art facilities to handle millions of instruments in image form, capturing data using leading edge ICR, OCR, data-capture and manual data entry
- Accessing organizational central computers by satellite links / web and complete processing based imaging workflow
- Skills in the utilization domain of accounting, legal and medical professions to process documents

## Clientele & Projects

This results in efficient and cost-effective processes with predictable turnaround time. GrowFast offers the best per transaction cost to our customers, giving them cost advantage as well as the opportunity for business growth, without infrastructure constraints.



Document Processing and Related Services available from GrowFast include.

- Process Study and Project Definition. System design, software re-engineering
- Document preparation, Document Transportation, Batch Preparation, Scanning of documents
- Quality Control, Data Entry and processing at our center in India
- MIS Reporting. Delivery of Images and Data Uploading to your business and document imaging system.



GrowFast's corporate culture is based on the theory that it is our people who give the organization its competitive edge. Human Resource Planning and Development are closely linked to the company's strategy.

Which is why human resource development at GrowFast is an integral part of the business and not an afterthought or a peripheral activity.

We believe our team members need to be informed, consulted and empowered so that they may perform to the best of their abilities. The company encourages a participative style of functioning and invests in the training and growth for all its team members. People from each division and department undergo periodic training programs that are relevant to their specific fields.

### Success Stories

GrowFast has developed and provided solutions to various business problems to a wide range of clients across various industries. Some of our esteemed clients are:

- Sterling Bank
- Regions Bank
- Rabo Bank
- Fallon-Clinic
- Corporation Bank
- Mangalore –Town bank
- KPTCL
- Mangalore Refineries and Petrochemicals Ltd
- BASF
- Global Enterprises
- Sterling Foods
- Mangalore Minerals
- Precision Polymers
- Central Agencies
- S.K Rubber products
- Karaavali Switchgears
- Global Distributors

### Projects Undertaken

Undertook Maintenance and further development of CAPS Software of Corporation Bank, which is a market leader in this area under the Cash Management, for collection of local cheques and outstation cheques for over 1000 corporate clients and the entire system moves over 74000 crores of funds per year, for Corporation Bank

Also undertook development of software for the payment processing centre of Corporation Bank

We also developed and are maintaining the Website of Corporation Bank

[www.corpbank.com](http://www.corpbank.com)

We have also developed other websites like

[www.sterlingfoods.com](http://www.sterlingfoods.com)  
[www.gurudevgroup.com](http://www.gurudevgroup.com)  
[www.hkabawa.com](http://www.hkabawa.com)  
[www.gci-india.com](http://www.gci-india.com)  
[www.cauverycoffee.com](http://www.cauverycoffee.com)  
[www.metaplast-india.com](http://www.metaplast-india.com)  
[www.karaavaliswitchgears.com](http://www.karaavaliswitchgears.com)  
[www.skrubberproducts.com](http://www.skrubberproducts.com)

A windows based software for signing a large number payment instruments like cheques/ D.D/Payorders etc. This software is particularly useful for undertaking printing of D.D's for Interest warrants (Large Volume Of Small Value Payments) etc.. executed for a major Multinational Bank

Undertook a development of software for Karnataka Agencies, Mangalore

Undertook development of a workflow solution for Sterling Bank U.S.A

Developed a Bonds trading system for Rabo Bank U.K

Implemented a Hospital Information system for Fallon-Clinic group of hospitals U.S.A

*At Growfast. We help you growfast*

Undertook a software solution for recruitment application form processing solution for a major utility company in India.

Developed a complete Billing and Sales Accounting system for a major FMCG Distribution company in India

Developed a Forensic bite mark recognition and matching solution for a major Hospital's Forensic research lab.

Developed a Provident Fund Accounting Solution for a major Public Sector Bank in India

Developed a Purchase cum Capital Asset Management Solution for the Information Technology Division of a major Public Sector Bank in India

Developed a Inventory Control and Material Management solution for a major Public Sector Bank's printing and stationary division.

Developed a software solution for reconciliation of smart card transactions with the payout details provided by the Smart Card Service provider of a Public Sector Bank.

Undertook a Business Process Consultancy assignment for a small Town Co-Operative Bank in India

Developed a Route Accounting System for a large FMCG products trading & distribution company based in Mangalore, India

Developed a a payroll application for a Major Metals and Plastics Manufacturing company based in Bombay, India

Developed a Multimedia Year Book on a CD for a large Engineering Institute based in Manipal, India

Undertook a IT Consultancy work for suggesting , configuring, evaluating a Digital Video Editing solution for a Major process and design house based in India



**Contact Address:** GrowFast Computing Services, I Floor Parthasarathy Complex, Kadri, Mangalore - 575002 India, ph: 91-824-215330, fax: 91-824-215330, email: sales@growfastcomputingservices.com growfast@hotmail.com, **Website:** www.growfastcomputingservices.com

*At Growfast. We help you growfast*